

EZ-Fit[®] TRANSLUCENT

The Passive Translucent Fiber Post System
Strength, Retention, and Stability.
All at a competitive cost to the dentist. It's an EZ-Fit!

FEATURES

Highly Translucent

Superior Strength

Excellent Radiopacity

Undercuts of the head and shank for High Retention

Multiple tiers

Positive seating head

BENEFITS

Provides the ability to light-cure cements and core materials.

Esthetic, metal-free restorations by reflecting the natural hues of the tooth and eliminates shadows through composite restorations at the gingival/crown interface.

The high percentage of unidirectional fibers (77% Glass / 23% Resin) provide strong reinforcement and superior transmission of light.

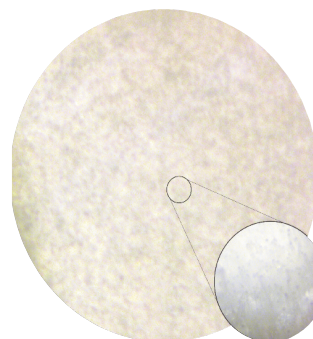
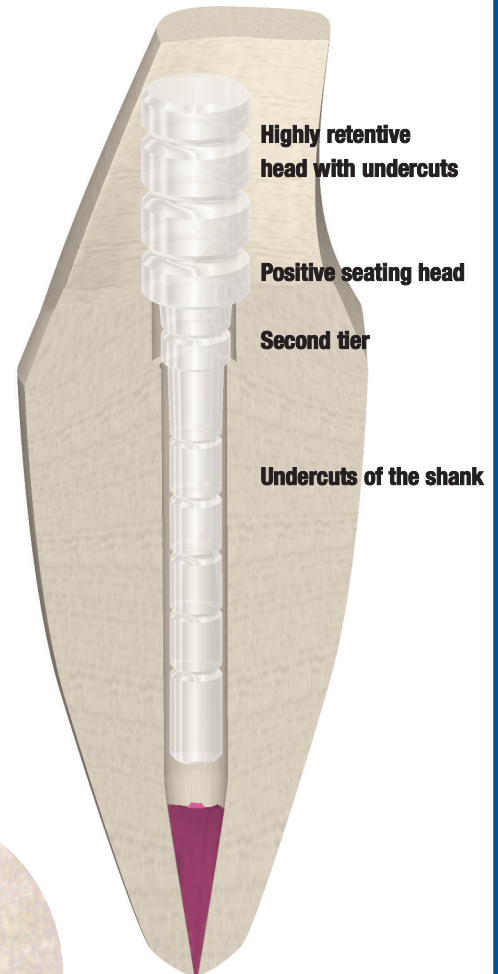
Easily recognizable on a radiograph.

Provides proven excellent core material retention. Locks-in post cement to provide high retention of shank within the root canal.

Unlike other passive posts, countersinking the post into the tooth prevents high apical stress under function.

Adapts to anatomical flare of canal for optimum dentin-to-post contact and maximum stability.

Stabilizes restoration by resting on tooth structure.



Unidirectional, light transmitting, reinforced fibers

EZ-Fit Passive Fiber Posts

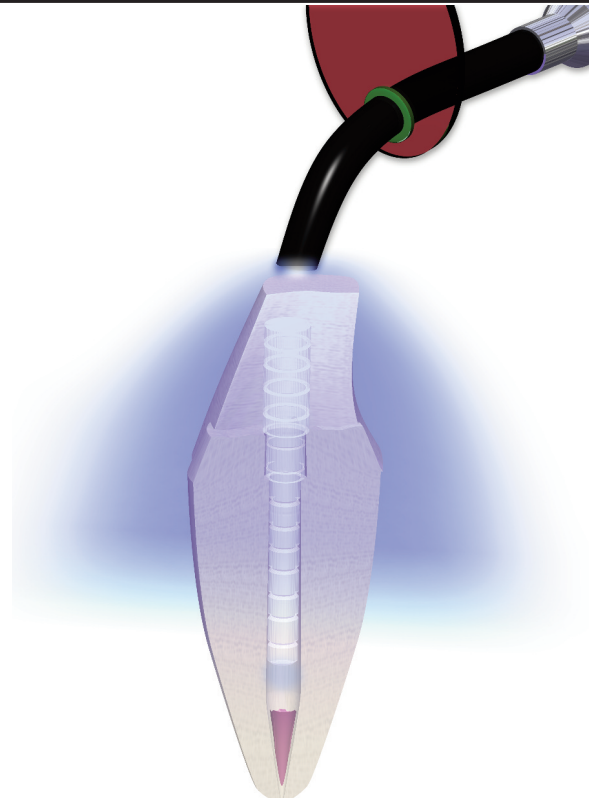
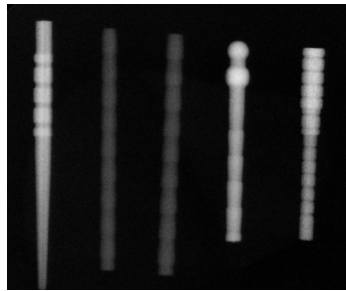
A new dimension in fiber post technology.

STRENGTH, RETENTION & STABILITY

The EZ-Fit post is the most advanced post in its class. Unlike “dowel” fiber posts, the second tier prevents “bottoming out” which eliminates the high apical stresses under function common to other passive posts. The proven second tier actually compensates for the natural anatomical flare of the canal for optimum dentin-to-fiber contact, even distribution of stresses and maximum retention. The result is a more intimate and secure dentin-to-cement interface.

EXCELLENT RADIOPACITY

The radiopacity of the EZ-Fit Translucent Post material allows the posts to be seen clearly on a radiograph. Radiograph of EZ-Fit Translucent Post (far right) and four other fiber posts.



TECHNICAL FACTS:

Post Number	0	1	2
Post:			
Length of Head	3.556mm	4.501mm	5.512mm
Length of Shaft	8.001mm	9.859mm	10.978mm
Total Length	11.56mm	14.36mm	16.49mm
Diameter of Shaft	0.85mm	1.148mm	1.397 mm
Diameter of:			
Primary Reamer	0.90mm	1.20mm	1.45mm
Gates Glidden	0.70 (#2)	1.10mm (#4)	1.30mm (#5)
Peeso	0.70 (#1)	1.10mm (#3)	1.30mm (#4)
Flexural Strength	1,238.6 MPa	1,238.6 MPa	1,238.6 MPa

ORDERING INFORMATION:

Size 0 EZ-Fit Translucent Passive Fiber Post Kit: Cat. No. 2535-0
 Contains: 10 - size 0 passive translucent fiber posts, 1 primary reamer, 1 secondary drill.

Size 1 EZ-Fit Translucent Passive Fiber Post Kit: Cat. No. 2535-01
 Contains: 10 - size 1 passive translucent fiber posts, 1 primary reamer, 1 secondary drill.

Size 2 EZ-Fit Translucent Passive Fiber Post Kit: Cat. No. 2535-02
 Contains: 10 - size 2 passive translucent fiber posts, 1 primary reamer, 1 secondary drill.

For Maximum EZ-Fit Translucent Post Retention EDS Recommends ENVY Self-Etch, Self Adhesive Resin Cement.

ENVY Cement Kits:

Translucent Shade: 9gm Auto Mix Syringe, 10 Large Mixing Tips, 6 Intracanal tips Cat. No. 960-00

White Opaque: 9gm Auto Mix Syringe, 10 Large Mixing Tips, 6 Intracanal tips Cat. No. 970-00

A2: 9gm Auto Mix Syringe, 10 Large Mixing Tips, 6 Intracanal tips Cat. No. 980-00



WARNING: This product can expose you to the chemical Bisphenol A, which is known to the State of California to cause reproductive harm. For more information go to www.P65Warnings.ca.gov.

For our complete line of patented dental products please visit our website at: www.edsdental.com

TANPASSIVEFIBER-0